

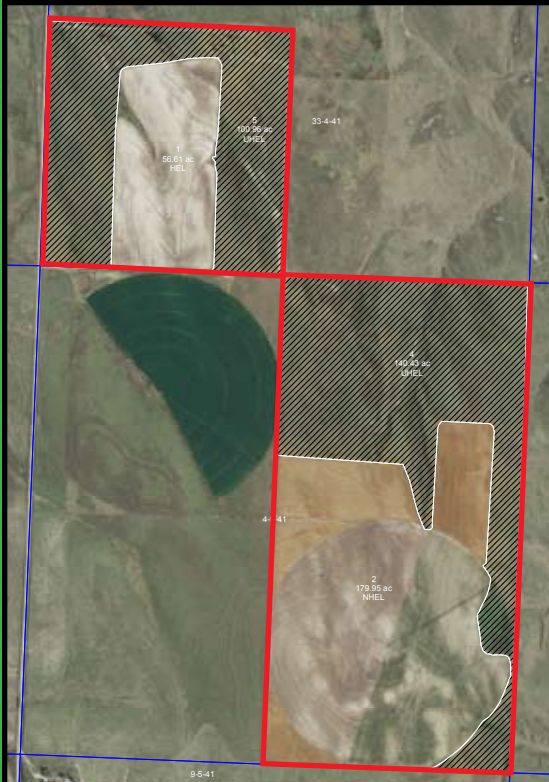
More Great Listings Offered by:



CHEYENNE CO., KANSAS LAND for SALE

800 +/- ac. Irrigated Cropland,
Dryland, and Grassland

Contact us today to add to your Real Estate Investments!



SW/4 of 33-4-41 and E/2 of 4-5-41

Approx. 480 acres

Asking Price \$596,300.00

241.39 ac. Grassland

120 ac. Irrigated Cropland w/ 10 Tower Sprinkler

90 AF/340 GPM

116.18 ac. Dryland

2015 Taxes \$737.97

Possession to Buyer January 1, 2017 on all acres unless planted to wheat.

Seller's mineral interest transfer to Buyer.



South Half of 9-5-41

Approx. 320 acres

Asking Price \$342,900.00

190.29 ac. Grassland

117.79 ac. Dryland

2015 Taxes \$595.69

Possession to Buyer January 1, 2017.

Seller's mineral interest transfer to Buyer.



Auction & Real Estate, LLC

d/b/a in NE as Auction & Real Estate by Western LLC

785-332-8990

westernauctionandrealstate.com

P.O. Box 928 - St. Francis, KS 67756

Betty L. Petersen, Broker 785-332-8421

Skip Petersen, Sales Agent

& Auctioneer 785-332-8221

Robin A. Petersen, Assoc. Broker

& Auctioneer 785-332-5586

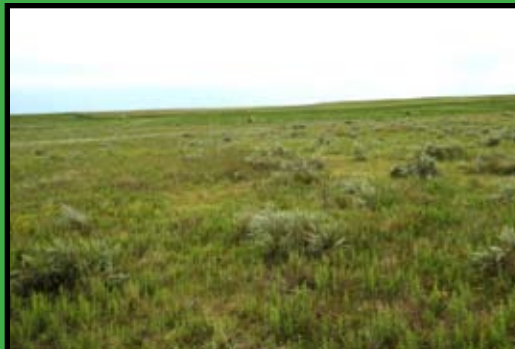
Brett Petersen, Ks. Agent

& Auctioneer 785-332-7121

Gary L. Wickwar, Ks. Agent 785-728-7049

"From Concept to Completion!"

Licensed in Kansas, Colorado & Nebraska



Location of the Property:

Approx. 10 miles Southwest of St. Francis, Kansas in the Benkelman Township and just 6 miles from the Colorado State Line.



Information provided, while not guaranteed, is believed to be from reliable sources. FSA information & maps obtained from the Cheyenne County FSA office.